

GRAND CANYON, ARIZONA

AL-9240 (FAA)

VOR/DME GCN 113.1 Chan 78	APP CRS 166°	Rwy Idg TDZE Apt Elev	4199 5996 6002
---	------------------------	-----------------------------	---

VOR/DME RWY 19

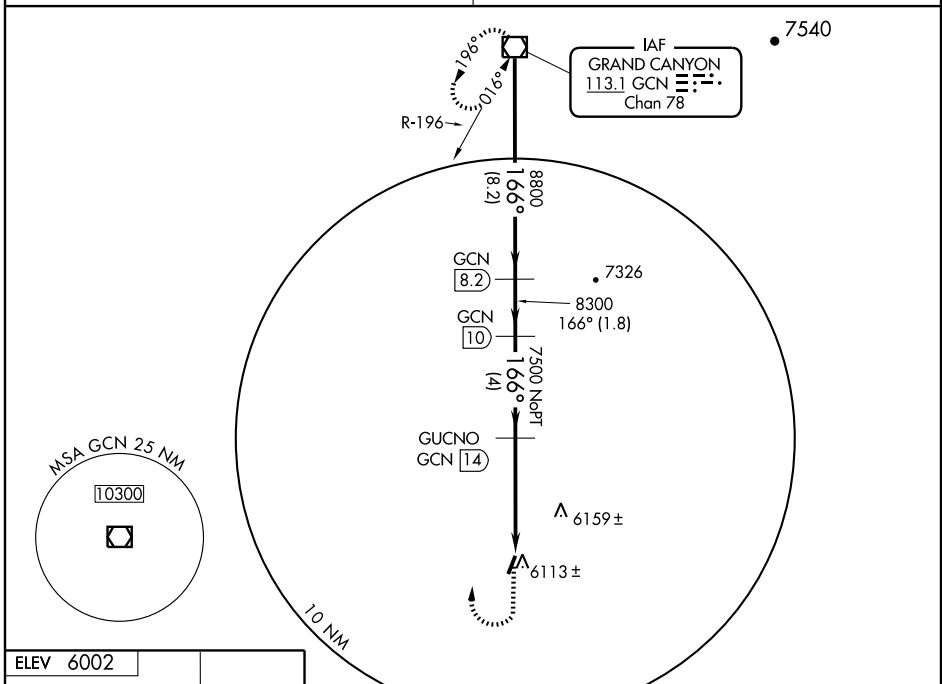
GRAND CANYON/ VALLE (40G)

⚠ Obtain local altimeter setting on CTAF; when not received use Grand Canyon National Park altimeter setting. When neither received procedure not authorized.

MISSED APPROACH: Climb to 7000 then climbing right turn to 10000 direct GCN VOR/DME and hold.

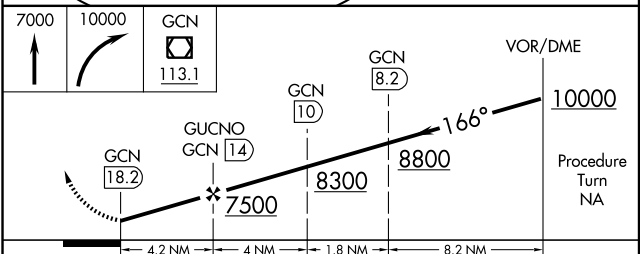
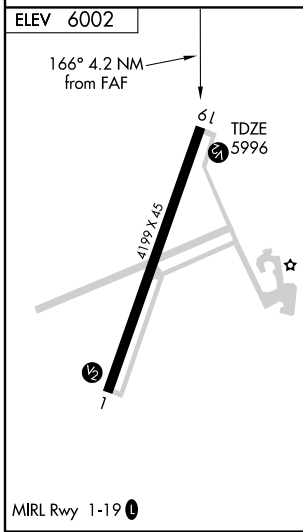
LOS ANGELES CENTER
124.85 319.2

UNICOM
122.8 (CTAF) 0



SW-4, 27 AUG 2009 to 24 SEP 2009

SW-4, 27 AUG 2009 to 24 SEP 2009



CATEGORY	A	B	C	D
S-19	6420-1	424 (500-1)	6420-1¼ 424 (500-1¼)	NA
CIRCLING	6480-1	478 (500-1)	6500-1½ 498 (500-1½)	NA
GRAND CANYON NATIONAL PARK ALTIMETER SETTING MINIMUMS				
S-19	6540-1	544 (600-1)	6540-1½ 544 (600-1½)	NA
CIRCLING	6620-1	618 (700-1)	6640-1¾ 638 (700-1¾)	NA

GRAND CANYON, ARIZONA
Orig 09239

35°39'N-112°09'W

GRAND CANYON/ VALLE (40G) VOR/DME RWY 19